



River Eden and District Fisheries Association

**2011 ANNUAL REPORT
to 60th AGM**



[The newest Eden Bridge. Knockupworth to Stainton](#)

GENERAL PURPOSES COMMITTEE

David Altham		Co-opted
Mike Ashwin		PAA
Mathew Baker		Co-opted
Bob Bradney	Vice Chairman	YFFC
Tony Britton	Secretary	CAA
Irene Downing		KSAA
Ian Gregg	Chairman	PAA
Mike Harrison	Treasurer	
John Pape		Independent
George Pearson		CAA
Graeme Proud		CAA

Secretary

Tony Britton
27 Cammock Avenue, Upperby
Carlisle, Cumbria
CA2 4PD
Email: agb1411@btinternet.com

CONTENTS

		Page No
1	Chairman's Report	3
2	Secretary's Report	6
3	Treasurer's Report	7
4	Angling Reports	
	Appleby Anglers	7
	Brampton Angling Association	8
	Carlisle and District Coarse Angling Club	9
	Carlisle Angling Association	9
	Gt Ormside, Upper Eden	10
	Kirkby Stephen Angling Club	10
	Penrith Angling Association	11
	Yorkshire Fly Fishers	12
	Borderlines	13
5	Eden Rivers Trust Report	14
6	EA Report	15
7	Salmon Summit	19
8	Bongate Weir Submission to Developer	19/20
	Membership Application Form	21

1 CHAIRMAN'S REPORT

i) Clive Mason

Clive's premature death was a huge loss to the river Eden and to his many friends. For fourteen years he was an exemplary river keeper for YFFC looking after their upper Eden fishing. A tree has been planted at Docelam's in his memory and a pool named after him.

Clive was the finest all round angler in the area. I had only just got to know him and fished with him on two occasions. One of these was at the legendary Redmire pool last year. This year in October his friends Steve Palmer and Chris Wynne scattered his ashes there, having fished all week without a bite.

We miss you Clive and think of Wendy and family.

ii) Officers and GPC

I am very sorry to report that our Vice Chairman Bob Bradney will be retiring as from the start of 2012. This will be a major loss to REDFA. Bob has been a GPC member since 1998 and deputy Chairman since 2004. During that time, as representative of YFFC, Bob has undertaken a wide range of vital roles for REDFA, including working with (and regularly chasing!) the EA on a wide range of fishery interests (in particular pollution), and monitoring planning applications and liaising with local planning authorities. Bob has given time, effort and commitment to any issue he believed important to the River Eden and its fish stocks. He has been a great help and support to me over the last two years. On behalf of everyone concerned I wish Bob a long and happy retirement to enjoy the fruits of his efforts.

At this stage I am not sure what arrangements will be put in place to fill this gap. This will be decided by the GPC early in 2012. It will also be a high priority to look at further strengthening the GPC to reflect the increasing importance of REDFA's work. In 2011 two new members were "recruited", Mike Ashwin to represent PAA and Mathew Baker, as a co-opted member. Both made valuable contributions in 2011.

The GPC and its officers focused attention on the following issues during 2011

iii) Fisheries Plan

The Salmon Summit on 22nd October was the most important event in 2011 relating to the River Eden. It was the start of a process to put in place a fisheries management plan based on sound up to date science, to which the EA, Natural England, Eden Rivers Trust and REDFA and other stakeholders are committed.

These bodies already carry out much good work on behalf of the river. But more needs to be done and everything needs to be collated into a plan, which sets out responsibilities and actions for all "partners" and which is regularly reviewed and monitored.

In spite of cut backs to Government budgets, angling interests now have a great opportunity. Conservation focus will be increasingly on "a whole catchment approach", DEFRA and EA are targeting significant funding streams to achieve improvement in water quality to meet Water Framework Directive requirements. The Common Agricultural Policy will be reformed in 2013, hopefully both introducing greater incentives to farmers to manage land in more environmentally sensitive ways and also requiring stricter compliance with the conditions attached to these incentives.

Anglers, clubs and owners can play a major part in all of this – as part of the BIG SOCIETY. Through REDFA they can make sure that the other partners and stakeholders in the fishery plan carry out what they have agreed.

For REDFA to carry out this role effectively, angling and fishery interests must play their part by

- Volunteering e.g. for electro fishing or ranunculus planting
- Taking part in the Anglers Monitoring Initiative
- Counting and helping to control piscivorous birds
- Helping to produce catch returns which are a key part of a fisheries plan
- Encouraging owners and clubs to contribute financially to the fishery plan, as an investment in their fisheries rather than a charitable donation

This is a big task in which I am greatly encouraged by the comments in the angling club reports regarding the quality of the Trout fishing, which seems to be showing significant improvement.

iv) Angling Trust

The Angling Trust continues to make progress as the single body representing angling/fishery interests at national level and is having a major input into national policies, strategies and guidelines on areas such as canoeing, hydropower, water abstraction and fish eating birds which local bodies like REDFA can link into.

The Angling Trust is making excellent progress at national level but the establishment of an effective regional structure under the Angling Trust North West Forum (NWF) is taking longer than anticipated. Until this is functioning effectively the North West Fisheries Consultative Council (NW FCC) continues to deal with regional issues. REDFA supports both NWF and NW FCC

v) Abstraction

REDF A (together with other NGO's) will take part in a very important consultation early in 2012 with United Utilities (UU) and EA. This will focus on the programme which UU will put forward for approval by the Government for improvements to water quality and supply as part of the AMP6/ PRO 14 process i.e. the programme of works and improvements that will take place from 2014 to 2020.

REDF A has asked UU and EA that they address such matters as metering leakage targets, storage capacity and other long term priorities set out in Blueprint for Water - www.blueprintforwater.org.uk, including trying to restore the natural ability of the Eden catchment to hold more water. targets, storage capacity and other long term priorities set out in Blueprint for Water - www.blueprintforwater.org.uk including trying to restore the natural ability of the Eden catchment to hold more water.

vi) Hydropower

At this stage, we are only aware of one specific hydro power initiative in the Eden Catchment at Bongate Weir, Appleby.

REDF A will support hydro schemes (and other renewable energy initiatives) that do not damage biodiversity, habitats or the environment or where potential environmental damage has been properly assessed, is limited and at least is adequately compensated for by other environmental benefits .

REDF A opposes this proposal at Bongate Weir Appleby because:

- We believe it will result in damage to spawning habitat and create problems for mature fish ascending the river and juvenile fish descending the river.
- The costs of repairing the weir and of long term maintenance have been seriously underestimated
- The (underestimated) costs are out of all proportion to the benefits
- The preferred option would be to allow the weir to continue to deteriorate, which would help to restore the natural hydromorphology of the river and help, rather than set back, progress under WFD

(a copy of REDFA's submission to the developer appears later in this report on page ??)

David Altham has submitted a response on behalf of REDFA in respect of consultation carried out by EA regarding the Hydropower Good Practice Guidelines.

vii) Anglers Monitoring Initiative

This scheme developed by the Salmon and Trout Association is a great opportunity for anglers to become involved in monitoring invertebrates, which are a key indicator of water quality and the health of the river. 2011 saw a significant increase in the number of surveys taking place including monitoring by YFFC above and below the sewage outfall into the Eamont at Brougham Bridge.

Ten volunteers were trained in May by Becky Helm of the Eden Rivers Trust. The majority of these have regularly surveyed sites since then. A map of sites being surveyed will appear in the Trust Newsletter.

More anglers and volunteers are urgently needed to extend this process to cover the Eden and all tributaries, Anyone interested in registering for the next training course should contact Becky Helm at Eden Rivers Trust on 01768 866788 email: becky@edenriverstrust.org.uk

viii) Change to Salmon Season

CAA, with widespread support from angling interests, have made a proposal to the EA that the start of the rod fishing season on the Eden be delayed by six weeks to 1st March and the end of the season be delayed by two weeks to 31st October. Discussions with the EA are ongoing. In view of the consultations that must take place, the earliest this might be implemented would be for the 2013 season.

ix) 2012 Objectives

In conclusion my aims for REDFA for 2012 are:

- Increased membership and more active and participation
- Working within a national structure provided by the Angling Trust
- Working locally in partnerships to achieve real progress in the important areas referred to above
- And in particular helping to develop a Fisheries Plan for the catchment

Ian Gregg

2 SECRETARY'S REPORT (Tony Britton)

The committee has met seven times this year and has been kindly allowed the use of the Eden Rivers Trust premises at Skirsgill and latterly their new premises at Newton Rigg Agricultural College.

Attendance by the members clubs and Associations has been very reliable generally – with a few exceptions! It is important all clubs and association come along and assist, thereby ensuring their views are part of the discussions and work we undertake on behalf of the river and angling interests.

We continue to be chaired by Ian Gregg, who has settled in. His experience in other river related voluntary roles is a considerable asset to the work of the Association. So too is the work of our “new” treasurer, Mike Harrison, who has got to grips with the members list and the financial affairs of REDFA. New members are always welcome!

Members of the GPC have also been active at regional meetings, requiring regular trips to Lancaster for meetings of the North West Fisheries Council and the fledgling Angling Trust North West Forum.

Carlisle AA hosted the annual junior members day in Rickerby Park, which was again very well attended and enjoyed by juniors of all ages!

REDFA continues to address the main threats to the river Eden, such as diffuse pollution, abstraction and piscivorous birds. REDFA may decide to resume the bird count on the River Eden. The Angling Trust have a feature on their website to show the national counts, to which we can all add our sightings.

The initiatives undertaken by the Eden Rivers Trust are once again to be commended in particular the electro fishing programme, fencing and habitat works, control of invasive species and the increasing amount of work undertaken with farmers to reduce diffuse pollution. These can only be of considerable benefit to the general health of the river Eden, its tributaries and the fish stocks they support.

REDFA joined forces with the Trust to organise the recent Salmon Summit held at Scotby, on 22nd October. The large attendance was indicative of the importance attached to this meeting. The need to monitor fish stocks of the River Eden to continue and expand habitat improvement work, and to provide sufficient resources to protect these stocks from illegal activity, were just a few of the items requiring attention. Discussions and presentations of the very latest scientific developments in genetics enlightened us all, and gave hope for the future, particularly now that more resources are being applied to help to understand more about the sea going stages of the salmon life cycle.

There are several amendments proposed to bring the Constitution up to date. The main changes are

- The omission of the Esk. REDFA has not acted on behalf of the Esk for many years (as agreed with the Esk and Liddell conservators).
- Delaying the date for the AGM until March the following year. This gives more time both to complete the accounts for the REDFA year (January to December) and also to collate relevant fisheries data for that year
- Generally updating and tidying the Constitution to bring it into line with current practice and technology

In relation to angling effort the weather playing its usual role. Trout was excellent in the early season but low waters in mid summer made the smaller waters a difficult proposition to fish. Heavy rain, resulting in flood conditions curtailed the sea trout in June/July. The salmon fishing was variable with the middle reaches probably having the better share of the fish, due to frequent rises in level allowing them to bypass the lower reaches.

Some very large fish were landed and returned. Late season runs again made rapid upstream progress and authenticated reports of many fish above Langwathby were received.

Three metres of flood water in the last week of the season, with no time for it to run off, brought the season to a blank end for some.

Tony Britton

3 TREASURER'S REPORT

I am pleased to report a small surplus as per the accounts Below.

Generally income levels are meeting expenditure and I will give more details at the AGM.

Year	2010-2011	2009-2010
Income		
Riparian Owners	£286.00	£286.00
Clubs	£392.00	£694.00
Members	£422.00	£456.00
Donations	£325.00	
TOTAL:	£1,425.00	£1,436.00
Expenditure		
Honorarium (Secretary)	£350.00	£455.00
Honorarium (Treasurer)	£325.00	£650.00
Stationary/Postage	£22.07	£63.45
Angling Trust	£50.00	£50.00
A.G.M	£190.00	£170.00
Raffle	£40.00	£36.91
Eden Rivers Trust (Room hire)	£200.00	£75.00
Webpage Management	£200.00	£200.00
NWFCC		£40.00
Kiltmakers (trophies)		£399.00
Other		£203.00
TOTAL:	£1,377.07	£2,342.36
Surplus	£47.93	(-£906.36)
Bank Balance as at 1/11/10		£577.58
Projected Bank Balance as at 31/10/11		£625.51

Cumberland Building Society account currently has a balance of £14,351.97

This money came from the Bedson legacy and is set aside for major emergencies or opportunities. It has been credited with £351.97 interest this year.

Mike Harrison

4 ANGLING REPORTS

Appleby Angling Association

Appleby Angling is now probably the only fishery on the River Eden that still has an annual restocking programme, this year it was decided to reduce the restocking numbers by over 50%. The Appleby Angling committee feel that as the Environment Agency now request us to stock with triploid fish we are no longer helping or improving the resident breeding stock of fish to become stronger. We feel sure that there is now a sufficient number of stock fish to become sustainable, making the object of becoming a wild brown trout river a reality. Hopefully this theory is being re-enforced by the fact that this season there has been a good show of fish with several caught approaching 4lbs.

At the end of the trout season there are reports of good numbers of grayling, especially in the upper beats of the Appleby waters. This has convinced the Committee to open the whole of our waters to anglers wanting to fish for grayling on a day ticket.

It was with this in mind that when the Grayling Society based its 35th Annual Gala in and around Appleby we were pleased to accommodate a number of their members on our waters to fish for grayling on their final day at Appleby. It was felt that this would not only put Appleby on the map but would promote the River Eden not only as a brown trout river but also as a rising grayling fishery.

At Appleby committee meetings and probably at other angling committee meetings up and down the country the most discussed topic on the agenda is the membership. How do we keep dwindling numbers of members, resident and non resident alike, how do we attract new members? Do we do more advertising or do we put all our faith in our new web site to attract new members. Appleby Angling Association is in the fortunate position to be able to tolerate this down turn in members financially, for a number of years, but without members the Association will no longer be able to function and this is now becoming a matter of concern.

To end on a brighter note, the River Eden seems to now be slowly getting back to something like the river it used to be, less pollution and fly life seems to be on the up, but the run off of rain water causing highs and lows in water levels and especially at the rate at which it happens still gives cause for concern.

Martyn Bell, Secretary

Brampton Angling Association

Brampton Angling Association offers season and day permit fishing for wild brown trout and grayling on the River Irthing and the River Gelt .Permit sales for the 2011 season got off to a better start than 2010 due mainly to the fine weather and good river levels in the early part of the spring. As the summer progressed, river levels were maintained due to the poor summer weather, which at least favoured the angler. Overall permit sales/membership have held up well, with an increase of about 7% over the previous season . From the membership list it is clear that we do suffer from a degree of rotation in membership with some members coming in, then leaving for a time, then returning as years go by.

Regarding the state of our rivers; following last year's collaboration with ERT, some work has been carried out planting willows in order to improve habitat and to reduce erosion. A number of otters have been seen on the river; hopefully a confirmation of improving water. However, predation on the river by fish-eating birds including cormorants and mergansers continues. We continue to receive complaints from anglers regarding the spread of Himalayan Balsam. An unfortunate consequence of fencing work having been done to keep cattle away from the river margins is that the protected thicket of Himalayan Balsam now hinders the anglers' access to the water!

Anglers catch returns continue to be a source of concern. While there is a small increase in the number of returns and the information contained in them is interesting and very encouraging, the fact remains that only about 15% of our members bother to make a return. Some of the returns show an increasingly improving situation on the river. One angler's return showed more than 200 fish caught with a high proportion of a takeable size but almost all returned to fight another day. There are large numbers of small brown trout but also a good number of notable specimens being caught and usually returned. The best recorded was a brown trout of 3lb 14 3/4oz and a number of others in the 1lb 8oz to 3lb 8oz class. Grayling continue to increase in prominence in catch returns. Again some excellent fish in the 2lb class and grayling increasing in spread from Gelt Foot up to St Mary's Vale. This can also hopefully be taken as an indicator of an improving water quality and aquatic environment.

Brampton AA, in addition to the annual permit which allows year round fishing for trout then grayling, also offers a fly- only grayling permit running from October to March. Grayling permits are readily available from the Post Office in Brampton. Further details of fishing, permit charges and contacts can be found on our website, www.bramptonangling.plus.com.

Bill Candeland, Secretary

Carlisle and District Coarse Angling Club

In April the official opening of the Club's Crofton Lake Education Centre took place. The club has also created a disabled access path as part of its plan to make the lake a genuine community asset. CADCAC was given £4,000 towards the £8,000 cost of the cabin by the Environment Agency. It will be used to teach youngsters and adults about Crofton's natural habitat and fishing. Borderlines who have worked closely with CADCAC for many years assisted with teaching young people under ISSP orders on the day. The disabled access path, plus trees, were paid for with a £22,000 grant from the Forestry Commission. Stewart Young, leader of Cumbria County Council, officially opened the facilities. The county council used to own the lake, and for 19 years CADCAC had it on lease until it was due to be auctioned off as part of the Crofton Hall Estate package in 2008. Following appeals, the authority had a last minute change of heart and sold the lake to CADCAC for £30,000 in a separate deal. The club received a 25 per cent discount on the condition that it continued its work to improve the site and make it a focal point for the community. Martin Chandler, CADCAC committee member, said the county council has provided invaluable support in achieving this aim. Although the education centre is new, CADCAC has been welcoming schools and youth groups to the lake for a number of years. In 2010 more than 700 local school children visited Crofton as part of Borderlines Morecambe Bay Project partly funded by REDFA. Mr Chandler is delighted with the progress that has been made since the club took ownership of the lake. He said: "This has been the biggest thing that's happened to our club since its foundation in the early 90s. What it has delivered is a legacy for the local community and future generations of anglers."

At the Club's AGM and Presentation Carlisle tackle dealer Pete Wilson was awarded the trophy as the club's overall champion. Following a memorable season's fishing Pete not only finished runner up in the CADCAC Summer league but also won the Gerry Clarke Summer League trophy awarded to the winner of the final summer match, the Summer League Heaviest Weight trophy, the Crofton Challenge Trophy and was CADCAC Winter League Champion. Other members receiving trophies were Robert Richardson, the 2010 summer league champion, Robert also won the Tim Wood trophy awarded to the winner of the opening match each season. The Crofton Friday League winner Ian Nevitt and runner up Dave White. Winter league runner up Pete Brown who also won the Winter League heaviest weight trophy. Martin Chandler won the Gerry Clarke shield awarded to the winner of the first match of the New Year. Crofton Summer League Champion was John Brooks and runner up Dave Gillies. Dave also won the Crofton winter league and Neil Rudd was runner up. Neil partnered by Andy Davidson won the Pairs trophy. The Crofton Junior League winner was Leonie Brooks, Leonie also picked up the junior league heaviest weight and biggest fish trophies. Alan Little won the Xmas Tankard.

Chris Bowman

www.borderlines.org.uk email christopher.bowman@talktalk.net

Carlisle Angling Association

CAA had a disappointing year with Salmon due to the high waters, and a poor Grilse run, although the increased weight of the Salmon does appear to be encouraging.

The Sea Trout appeared to be improving although this was spoilt by high waters which restricted night fishing.

The Brown trout season was excellent with fish reported to 3&3/4 Lbs, with some very good hatches seen on the river.

CAA held their junior anglers event in July, was well attended with approx 100 Juniors, plus parents attending.

We are also pleased that the access at the bottom end at Spa house has been restored with the tunnel under the western by pass being opened.

CAA has had problems with a land slip adjacent to the new Bridge over the Eden which now seems to be resolved.

David Altham (Secretary)

Great Ormside Fishery, Nr. Appleby

Early season proved very effective for the anglers that braved the cooler weather in March and April. Some large Wild Brown Trout were caught, with a couple in the 4lb region, which greatly rewarded these early anglers. These are exceptional fish by any river standards and we see many large fish showing from time to time. The success patterns were Waterhen Bloa, Greenwell's Glory, Partridge and Orange the classics for the spring fishing. I also had reported, **true** March Browns being seen and taken on the Eden which on many rivers are becoming a rarity. The Eden has always had this fly hatch but often quite spasmodically along its length.

As May progressed the fly life started to increase with pretty good hatches of Blue Winged Olives showing many days. Although many were quite small in size. Nevertheless an improvement over what had been seen over the last few years. Let's hope the dreaded sheep dips are at last under control and the voluntary cessation of the Pyrethroids was at last clearing out of our rivers. It's a complex equation as to what is causing the problems with fly life on many rivers and having experienced the improvement this year I'm sure it will continue next season.

May continued with Wild Brownies being taken by most anglers each day. Of course being a purely non stocked wild section of the Eden there was a variety of sizes reported over the month. Catching fly patterns were Snipe and Purple, Greenwells Glory winged and Woodcock and Hares Ear (tied as a spider pattern) and Little Woodcock. If you look over the Tufton Arms Bar, Appleby, you will see a huge Brown Trout caught on a size 16 Little Woodcock which shows the deadliness of this Eden pattern for large fish..

Then came, as every river in June experienced, the bright sunny days and the river started to show its bare bones, but once again Trout were caught but mainly in the late evening as the sun dipped over the horizon. Good hatches of fly of many types were showing over the river as the light started to go, with dancing Spinners in whirling groups, and rising Duns attempting to make the riverside trees and grasses to go through the next stage in their life cycle.

This was the magic hour when Wild Brownies look for their food after facing blazing sunshine throughout the day.

Mid July we started to see a little rain again and once more daytime fishing started to return nice trout to the visiting angler.

August was mixed, with water levels up and down on a regular basis and but trout continued to be grassed September showed much the same, giving great satisfaction to anglers that braved a little lift in the water levels to fish Dry Fly. The successful patterns were Lunns Particular and Greenwell's Glory, occasionally Sherry Spinner. Some anglers had success with a Blue Winged Olive Dun imitation The last week of September was virtually washed out by high rivers.

Overall, a quite excellent year, with many very good Wild Brown Trout being netted. This showed how many anglers were successful this year, in that a fair percentage returned several times enthusiastically throughout the season to fish the Upper Eden Fishing's again.

We now look forward to the Atlantic Salmon moving upstream to spawn all along this section of the Eden and to successfully fill the Redds with their offspring during the winter period.

Tight Lines and Good Luck next season.

John Pape

www.edenflyfishers.talktalk.net

email: jpangler@btinternet.com

Kirkby Stephen AA

2011 as been another good year for KS&DAA in terms of the quality of the fishing and financially. Season membership, despite the usual turnover, has remained around the 80 mark and, once again, we've sold well over a hundred day tickets (many to repeat visitors). The result is yet another year when we've been able to operate at a profit. Our no stocking policy seems to be attracting new members and visitors.

With regard to the fishing, despite the low water during the Spring, the river continued to produce a good crop of big fish. Many of which were returned.

The low, clear water gave an opportunity for the careful to see the number and size of the fish that are resident in the upper river. Even I was surprised!

I know of at least forty 2lb+ trout being caught, many others that were only just short of that and at least eight that were 3lb+. And it's not only big fish we have. By May the smaller fish were starting to appear in numbers that bode well for the future.

In addition to the trout, plenty of big grayling made their presence known to some lucky anglers. I personally came in contact with one that was measured at 19 inches before being released. While the lower river seems to have a lot more grayling, we definitely have some good specimens at the top of the river.

The fly life has been a little unusual to say the least. Although prolific at times, the timing of the hatches was odd which may be due to the last two winters being relatively hard compared to what we've got used to recently.

As an example, the (limited) Mayfly hatch that we have at the top of the river was over and done with by mid May. It doesn't usually start until June. However, we have seen the full range of species with some good hatches of Iron Blues which can be a little frustrating when the fish get locked onto them and will not look at anything else!

If 2012 is as good we'll have nothing to complain about.

John Garner

Penrith Angling Association

Last year I envisaged our association would not achieve a full membership due to the current financial situation, however, we had a flush of application in the early part of 2011 and by the 1st March the membership was again full for the 11th year in succession, with surplus applicants following the above date being added to the waiting list for the 2012 season.

The day tickets sales however were down on previous years, whether this was due to unsettled weather conditions or - as someone suggested, many anglers may have decided on joining local club rather than travel far and pay costly day ticket prices in these financially difficult times particularly with the price of fuel these days.

The season commenced with difficult fishing conditions, marred by low clear waters and continuous days of bright sunshine. It was a pleasure to be out in March and April in such weather but it does have an adverse effect on not just on the trout's feeding behaviour but also the fly hatching times. The problem in these conditions early season is that important species of fly such as the large Dark Olive rarely get concentrated into short abundant hatches, and are more likely trickle off over a longer period throughout the day. So although similar numbers of fly may hatch during the day it is not as noticeable to either the angler or the fish.

The emerging duns also don't stay on the water surface as long due to their wings hardening much faster than they do in colder conditions, therefore consistent feeding fish can be few and far between.

Unlike newly or even first-winter surviving stocked fish, wild trout avoid leaving their safe areas for long periods in these low clear waters and bright conditions if there is insufficient food to warrant the risk of predation, in other words they are not going to sit out in the open water if there is no food coming past them. The result was that rises were sparse even searching with nymph patterns didn't produce the numbers of fish expected in these early weeks of the season. This situation was commented upon by many anglers not just locally but from many parts of the country, with exception of those rivers/stretches with stocked fish.

For the rest of the season there were many periods of unsettled weather and yet even in periods of warm daytime temperatures evenings were still cool and those warm summer nights were few and far between. Due to these cold nights average water temperatures appeared to be below normal for most of the season, many anglers commented on having to wear extra layers of clothing under their waders well into June. Usually fish can be found in fast shallow water in mid summer but this season those situations were not as frequent. Only those anglers who were able to pick and choose the best evenings to fish found good sport, most other anglers found the majority of evenings - particularly those that can only get to fish the weekends, generally unsuitable for good spinner swarms and falls of spent spinner.

However, having stated all the above, many large trout were caught this season and some good catches were had when conditions were favourable. Even I was lucky enough to find a 22 ½" trout which weighed 2oz under 4lb.

Grayling are still not found in the numbers we saw in the late nineties, but are notorious to go through peaks and troughs, perhaps those peak periods found exceptional conditions and showed a population beyond what would be considered normal population for the Eden system or have the larger than normal floods in the last decade destroyed the grayling spawning areas and favourable habitats.

The Salmon fishing was fairly good in these upper reaches due to the constant high river levels over the last month of the salmon seasons as yet I have not had catch returns to show numbers caught, but have heard of some good size fish, 29lb and 20lb being the largest caught by PAA members known to date. There were reports of several very large salmon seen some estimated well into the 20lb – 30lb mark. Last season in late April two creditable salmon anglers observed a enormous fish jump 3 times in front of them on one of our middle beats, both anglers agreed on a estimated weight. All I will say is that they said the cast of Mrs Ballantine's fish in Norris' looked small in comparison!! Let's hope those large Eden spring salmon of the past are seen again.

Andrew Dixon

www.penrithanglers.co.uk

Yorkshire Fly Fishers Club

Trout fishing conditions during the spring and early summer were far from ideal with little rain and many clear bright days, in fact the spring was a carbon copy of 2010, only this year we always seemed to have a strong wind to accompany the dry bright days. To sum up the spring fishing was challenging, however during the summer and autumn months we had regular rainfall and hence fishing conditions improved.

Unfortunately the improved conditions did not entice many trout anglers to wet a line and activity on our beats has been relatively low, however there have been a number of catches and incidents reported.

Eden. (Crackenthorpe).

The Crackenthorpe beat has fished well this season producing several specimen trout and grayling, the best of which tipped the scales to 4lb and 2½ lb respectively. The most productive fishing, or easier fishing was in the spring months during which time there was some excellent fly hatches, as the season progressed the fishing did become more of a challenge and the best sport was usually during the last hour of daylight.

Eden (Langwathby).

From the accounts received the Langwathby area has not been fished by many trout anglers which is a pity as there have been times when there were plenty of rising fish, particularly during the months of May and June. Two member caught trout weighing over 4lbs and also a grayling that weighed in over 4lbs, the latter would be close to the British record rod caught grayling, unfortunately the member didn't have a camera to record such a splendid fish.

On the Eamont the fishing has again been a little patchy. However it was reported that there were several decent evening fishing sessions during May and June with a few large trout caught.

Eden (Wetheral)

The trout fishing on the lower Eden has been good this season with particularly excellent sport during the unseasonably warm early spring, during this time there were healthy fly hatches. It seems that in most seasons the trout feed well during September but this year the water levels were too unsettled to support good fly hatches and hence the sport was somewhat indifferent, however overall it is believed that the numbers of trout in the lower river continues to improve, a trend which has observed in recent years. Regarding grayling fishing it seems that the number of fish appears to be down when compared with recent seasons but it is understood that beats higher up the river were catching good numbers of grayling, so there seems not to be an issue. During the last few winters Wetheral beats have fished well for grayling.

Salmon

Eden (Wetheral)

Despite good water conditions for most of the summer and into the autumn, catches have not been exceptional. It is reported that a total of 108 salmon were caught during the season, of which 80% were returned.

June was a good month, with one member taking four fish in the day on the 17th. Good flushes of water kept fish coming through this month and on during the summer. August turned out to be the best month of the season on Wetheral and despite the good water conditions continuing more or less to the end of the season, fish were hard to tempt. There were lots of fish in the beat during September and on into October but the percentage taken was disappointing. The last week of the season was not fished because of the very high water conditions and so brought to an end what can best be described as an average season for this beat. There were four fish over 20lb caught during the season and the biggest being 22lb.

Upper Eden (inc Armathwaite)

The story was much the same on the Upper Eden beats as at Wetheral with good water conditions on and off for most of the summer. As always on these upper beats, it wasn't until September that the bulk of the fish arrived and during this month 57 fish was caught.

Down at Armathwaite, sixteen fish were caught during the season with YFFC members accounting for six of them. All in all not a bad season on these beats with the total number of salmon being 129, which 80% were returned.

Bob Bradney and Mike Grimes

Borderlines

During 2011 Borderlines have worked with amongst others Carlisle Youth Offending Team, Greystoke School, Carlisle and District Coarse Angling Club, Carlisle Angling Association, New Cumnock Primary School, New Cumnock Angling Association, Maxwelltown High School, Carleton Hill Fishery and Impact Housing.

We have continued to work in partnership with SEPA, the Galloway Fisheries Trust, Buchleuch Estates and both the Nith District and the Annan District Salmon Fishery Boards on the Fishing for Knowledge Project that saw 207 children from Dumfriesshire schools take part in school programmes and a Family Day. A further 56 Nursery School children took part in just the freshwater life, freshwater fish and angling history sessions in the classroom and many more children took part in casting competitions when angling was incorporated into the Lockerbie Primary School Sports Day. In a project funded by the Environment Agency Borderlines worked with these same partners in schools in the Border Esk catchment.

We are working closely with Cumbria Constabulary and Wigton Youth Station on a long term engagement programme in Wigton aimed at steering youngsters away from crime through involvement with angling and the environment and some interesting facts recently came to light whilst gathering information for a funding bid to try and keep this project running. Evidence supplied by the Police shows that during the time that the fishing club project has been running Anti Social Behaviour Incidents in Wigton reduced from 54 a month in July 2010 to 21 a month in September 2011. Some young people taking part had been excluded from school and had caused both crime and ASB in Wigton. These young people's behaviour has changed dramatically; we believe this is due to the positive role models provided by the fishing club.

Personal highlights for me in 2011 has been seeing the improvement in the school work of youngsters with learning difficulties following participation in our school programmes, that and the CAA Junior day when it was heart warming to see so many family groups enjoying the river Eden in Rickerby Park. There is far more to fishing than catching fish.

Chris Bowman

www.borderlines.org.uk email christopher.bowman@talktalk.net

5 EDEN RIVERS TRUST REPORT

ERT REDFA Report

It seems like a bit of an overused cliché but this year has been an incredibly busy one for all at ERT. Aside from our project work we have also moved offices to a great new facility at the Newton Rigg College campus.

Space precludes me from describing all of our conservation and education projects in detail. However you can 'Read All About It' in the Winter 2011 Newsletter to be distributed in mid-December.

The rest of this report will be devoted to the 'Fishy Business' that ERT is currently involved with.

2011 Fisheries Survey

Again we have sampled over 200 sites in the headwaters of the catchment. Data is currently being analysed and as such it is too early to draw any firm conclusions. However we can report that the River Leith appears to be on an upward trend in terms of numbers of salmonids present. As reported last year the Petteiril continues to show the early signs of an improvement in fish stocks. However, it should be noted that if this is a real recovery that it will be in all probability, a fragile one. As such we are continuing our efforts to address impacts limiting fish stocks by continuing to deliver habitat and farm conservation initiatives in these important tributaries.

Salmon Summit

I have reported elsewhere in this REDFA Annual Report on what was a highly successful day. Feedback from delegates and those taking part has been very positive. I must thank REDFA who jointly hosted and funded this event.

2011 Trout Questionnaire

The 2011 trout season was nothing short of world class up until the end of June. We then had a protracted period of very unsettled weather which made for some very difficult and frustrating fishing conditions. In a completely non-scientific manner I am canvassing opinion regarding trends in the trout fishing / insect life in a bid to build up a greater understanding of Eden trout. Please contact me at the ERT Office if you would be interested in making a submission. Results will be presented in a short summary report early in 2012.

Eden Fishery Archive

I am still collating information for the Eden 'Fishery Archive'. Despite some very welcome assistance progress has been not as good as I had hoped. I am aware that there are some very important records, diaries and photographs out there that would really add value to the archive. Aside from posterity the archive would be invaluable in our efforts to understand just how good the Eden once was.

English Rod Caught Record Salmon

I am delegated to report that 'in principle' the Natural History Museum have agreed to once again to loan us this important part of the River Eden's fishing heritage. The fish caught in 1888 was weighed in at 55lbs, measured 54" long and had a girth of 27". We are currently exploring possibilities to display the fish at Tullie House Museum.

2012 Wild Trout Trout Weekender

Following-on from the highly successful 2011 event, we are planning next year's Weekender, again in partnership with the Wild Trout Trust. The dates are confirmed and 2nd and 3rd June at the Tufton Arms Hotel. The Wild Trout Trust will be combining the event with their annual meeting. Over the coming weeks I will be contacting owners and clubs who so kindly donated beats for the 2011

fundraising fishing days. The 2011 event raised over £1700. Internationally renowned fly fishers Paul Procter and Stuart Crofts are booked as speakers. More details to follow soon.

Pennine Trout Streams Project

We have submitted a funding bid to the Environment Agency for three year project to improve and protect the trout becks of the Pennines. The becks within the Pennine Fringe sub-catchment of the Eden form an important brown trout and salmon spawning and nursery resource. Whilst many are in good condition there is a significant risk of deterioration through the combined effects of agricultural intensification and climate change. The project will increase our knowledge of how to manage this suite of threats to upland systems. The project will also develop a guidance manual and deliver a range practical projects to protect these important resources. Experience gained will be used as the basis for best practice to be shared with other fisheries managers such as the EA and Rivers Trusts.

The project will aim to maintain current Good Ecological Status of the Pennine Becks by implementing range of prescriptions to both improve habitat and water quality. This will be achieved through a programme of on farm conservation advice which will be the trigger for both diffuse pollution and habitat works on six farms per year. A rigorous monitoring programme will be deployed to both track improvements in habitat, temperature and water quality at a reach and sub-catchment level. Target areas on each beck have been identified by Eden Rivers Trust through the outputs of previous ERT research and walk over surveys.

Fish Eden

We have also submitted a bid to the EA to develop a marketing project about the wonderful fishing opportunities on the Eden. This project will deliver two high quality initiatives (web and magazine) and a subsequent event to both raise awareness of and drive an increase in the number of angler visits to the river. ERT feels this is a unique opportunity to market fishing to the visiting angler on our highly accessible and beautiful river of some 80 miles in length. Nearly all fishing beats along the upper, middle and lower river are accessible in terms of availability and affordability.

Ian Gregg – ERT Trustee

Ian Gregg will be retiring as a Trustee of ERT in December. I would like to pay particular tribute to the immense efforts and contributions Ian has made during his many years of involvement with ERT. The fishing community of the Eden owes him a huge debt of gratitude and REDFA are very lucky to have him as Chairman. From a personal point of view I have found working with Ian to be great fun, stimulating and inspirational. I wish Ian all the best in his 'retirement'....more time for fishing now, eh Ian.....!?

Simon Johnson ERT Director

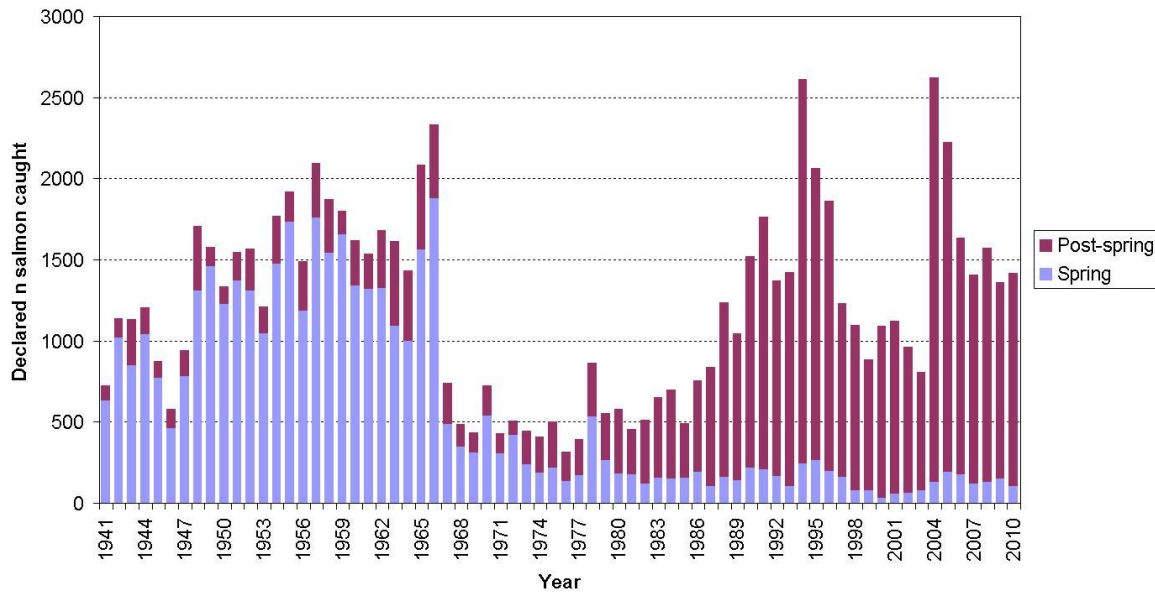
6 EA REPORT

Salmon rod catch, 2010

Declared salmon rod catch from the River Eden in 2010 (provisional 2011 data will not be available until late spring 2012) was 1,418 fish of which 866 were returned. This is the highest recorded percentage of fish that have been returned to the Eden and represents a tremendous achievement by its anglers. From the graph below, these catches were broadly similar to those of 2006-09, lower

Than those of 2004 and 2005 but considerably higher than those in the late 90's and early 2000s

Declared salmon rod catch, River Eden

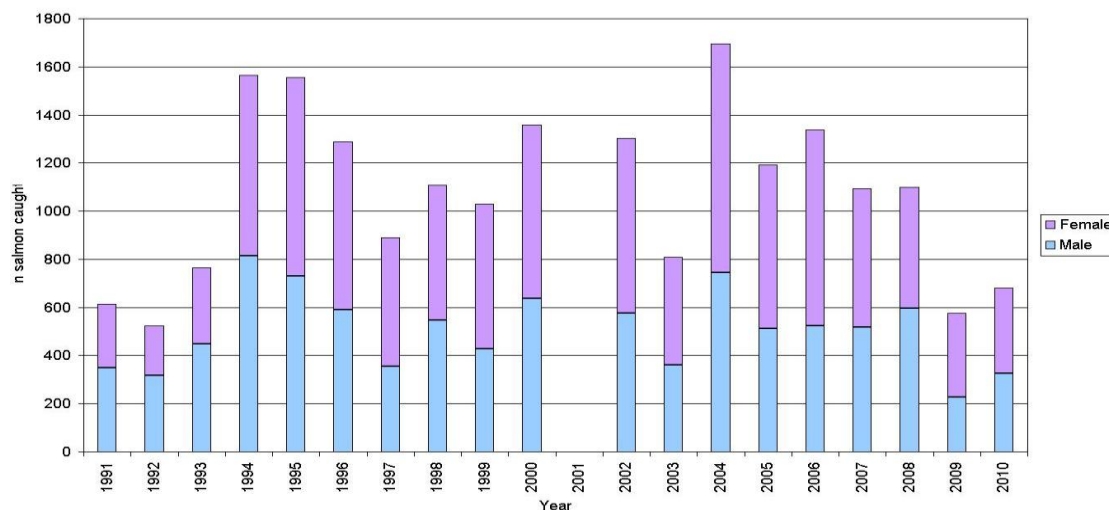


Caldew Trap catches, 2010-11

The Agency operates a fish trap on the River Caldew in the outskirts of Carlisle. This trap catches every ascending fish and all fish are counted and measured before being released upstream of the trap to continue their spawning migrations. It should be noted that no fish or their eggs are removed from here, nor have they ever been. In contrast to the catchment-wide salmon rod catches described above, numbers of salmon caught in the Caldew trap during the 2010-11 spawning migration were, as in the 2009-2010 season, poor. Just 681 salmon were caught in the trap this year and fewer of them were larger, multi-sea-winter fish. As a result of this, estimated egg deposition in the Caldew catchment in 2010-11 was the lowest we have ever recorded, failing for the first time to exceed the Conservation Limit for this important tributary. This is a considerable cause for concern and remains so for 2011/12, because relatively few grilse have been reported in rod and net fisheries this year

and these are ordinarily the mainstay of the R Caldew

Total number of salmon caught in the Caldew trap



Corby fish counter

Data from the fish counter on the River Eden near Wetheral is available for most of the period from 2000 onwards, as below. Unfortunately much of the data for this year (2011) has yet to be quality-assured because of occasional glitches with the equipment and staff time constraints. However, the counter has continued to operate throughout 2011 and all data collected will be processed over the winter period.

Monthly net upstream counts from Corby fish counter

Month	Net up count											
	2000	2001	2002	2003	2004	2005	2006	2007	2008	2009	2010	2011
January	41	51	142	243	267	460	536	38	343	285	157	576
February	15	70	174	19	60	28	37	8	75	84	35	
March	19	44	75	153	115	197	79	57	134	143	278	
April	217	194	223	322	250	222	155	214	282	336	199	
May	411	556	680	752	744	746	652	435	442	790	556	
June	1417	546	534	460	566	763	556	1559	1061	1577	1387	
July	1140	1300	752	636	927	490	725	95	805	1563	1280	
August	818	586	1074	341	1419	1165	908	687	2128	1151	1079	
September	1019	1275	797	952	1902	2267	2291	2614	1389	1394	3193	
October	775	1408	2238	649	2887	1958	2401	1945	2822	2769	2282	
November	940	868	994	1613	1575	636	980	1647	845	820	756	
December	522	376	960	607	1518	682	196	1113	996	355	527	

Season-long net upstream counts from Corby fish counter

Year	2000	2001	2002	2003	2004	2005	2006	2007	2008	2009	2010
Season year (Feb to Jan)	7344	7365	8744	6771	12423	9690	9018	10717	11264	11139	12148

As the above tables state, these data are net upstream counts and so are a mixture of salmon, trout, grayling and other species including sea lamprey (for example, sea lamprey account for some 1,000 or more counts in early summer). Species apportionment work is ongoing so it is hoped that we will be able to split these counts up into species in the future.

Total net upstream count in 2010 was 12,148, higher than the previous few years but not as high as recorded in 2004 were 12,423 “fish” were counted.

Review of the River Eden Salmon Action Plan

We, in conjunction with REDFA and ERT, are currently reviewing the River Eden Salmon Action Plan and would like to know what you think the outstanding issues are that are impacting on salmon and sea trout in the Eden catchment, and also what actions you think are necessary to address these issues. Note that the document produced will be a Sea Trout and Salmon Action Plan, reflecting the decline in sea trout over the last ten years, so as mentioned above please bear this in mind when considering the issues and actions required.

This revised plan will form part of our River Basin Planning under the Water Frameworks Directive and will be reviewed every six years. Please contribute by emailing your comments on these issues and actions to edensap@environment-agency.gov.uk by 31 January 2012. We need your views!

Additional online information

Red vent syndrome in salmon

Over the last five years a varying proportion of returning salmon have had swollen and /or bleeding vents, and this has been attributed to a small parasitic worm called *Anisakis simplex*. However, it is unclear why this is affecting fish vents. The website below contains a link to a severity guide (with pictures) and anglers are encouraged to report any salmon showing this condition to the Agency at the email address given there.

<http://www.environment-agency.gov.uk/research/library/publications/108274.aspx>

Annual assessment of salmon stocks

The latest EA / CEFAS annual assessment of salmon stocks report (2010) is available online at the link below.

<http://www.environment-agency.gov.uk/research/library/publications/131876.aspx>

Andy Gowans

7 **SALMON SUMMIT**

Eden Rivers Trust and REDFA hosted a Salmon Summit for over 100 attendees on the 22nd October at Scotby Village Hall, Nr Carlisle. This was in response to the Environment Agency's request for assistance with its obligation to review of the Salmon Action Plan for the Eden.

The aim of the Summit was to bring stakeholders up to speed with the latest data, trends and developments in the scientific understanding of Atlantic Salmon populations both for the river Eden and the wider Atlantic area. The day started with ERT Director, Simon Johnson pondering over the question 'just how good was the Eden'? by presenting both data and historical archive material. This was followed by Dr Andy Gowans from the EA presenting on 'and how good it is now'?

World class fisheries scientists including Dr Eric Verspoor, Dr Mark Coulson and Dr Ronald Campbell then provided fascinating insights into cutting-edge research on factors affecting Atlantic Salmon such as appraisal of re-stocking programmes, marine survival rates, smolt migration routes and the genetic mapping of in-river populations.

Later that day delegates heard presentations from the Environment Agency, Natural England, Eden Rivers Trust and REDFA regarding the projects and initiatives they were delivering and planning to assist with efforts to conserve this iconic fish. Dr Keith Hendry (APEM Aquatic Scientists) also suggested a 'Toolbox' of options for implementing a Fisheries Management Plan which included setting objectives, investigation, diagnosis, implementation and monitoring. The day ended with a 'Question Time' style session in which there was much debate and exchange of views about some of the issues affecting salmon and the wider health of the Eden system.

Proceedings from the day are available on the ERT website www.edenrivertrust.org.uk Next steps will involve ERT, REDFA, the EA and NE. developing action plans by 31st January 2012. A further conference to report on progress is planned in March 2012. This is viewed as a first step in a process of developing an overall (multi-species) Fisheries Management Plan for the Eden. A dedicated email address has been set-up to aid the consultation process: salmon@edenrivertrust.org.uk

Simon Johnson

ERT Director

director@edenrivertrust.org.uk www.edenrivertrust.org.uk

8 **BONGATE WEIR SUBMISSION TO DEVELOPER**

Comments are in relation to the report dated 20th June 2011

1 REDFA is the consultative that represents the angling community of the River Eden. All the angling clubs have representation and the majority of our membership would be affected by any impacts on fish spawning sites in the Upper Eden, or impacts on fish access to and from the Upper Eden spawning sites. We therefore feel that we have a strong vested interest in your proposals. It should be stressed that any damage to Upper Eden salmonid spawning potential will impact the salmon fishery throughout the catchment, apart from its importance as a recreational resource for local residents, which is a major tourist attraction which brings in annually c £2,000,000 to the local rural economy.

2. REDFA will support hydro schemes (and other renewable energy initiatives) that do not damage biodiversity, habitats or the environment or where potential environmental damage has been properly assessed, is limited and at least is adequately compensated for by other environmental benefits.

3 The river is an SSSI and SAC. Designated species include salmon, lampreys and bullhead. Eels are also present. Therefore the scheme should take these and other designated species fully into account. It fails to do so - other than general references.

4 REDFA fully supports the SSSI and SAC designation and the conservation legislation that protects the Eden. As a result of the Habitats Regulations we have seen improvements on the Eden in water quality and quantity; riparian management improvements and greater protection from damaging development activities.

REDFFA also supports the Water Framework Directive and the work that is being carried out to help move towards good ecological condition throughout the Eden catchment.

The proposed scheme will provide a set back to this progress, in particular

- It will deplete a section of the river below the weir, which is important habitat and a spawning area for salmon, trout and particularly grayling.
- Some of the most important salmonid habitat and spawning areas of the Eden system are above this weir. Any reduction in flow over the weir creates extra risk that salmonids may not reach these habitats.

5 What costs are included for rebuilding the weir seem grossly underestimated in the project costs at £5000, and not included in the main report's budget costs. The report also states that the weir and surrounding land's ownership is unknown and that "In the longer term, periodic maintenance of the weir will have to be undertaken to ensure proper control of the flow over the weir, fish pass and entry into the hydro installation. It is unclear as to who would be responsible for any repair work on the weir or where funding might be obtained to carry out the work." The responsibility should fall on the developer, and should be fully accounted for in the budget.

6 The fish pass and alteration to the weir structure and the impacts this has on flows will be situated in the river for a long time. Once the hydro scheme becomes even more financially unviable e.g. if feed-in tariffs cease in the future, or the Trust/Company that manages the scheme ceases to exist, the structures associated with the scheme will become defunct. Who will then be responsible for ensuring that the defunct structures do not impede fish passage or flows?

7 The costs of the scheme – which do not include weir repair and maintenance or environmental impact assessment and mitigation – are clearly disproportionate to any benefit. Current "rapid increase in energy costs" is stated as a justification for the project, but then complains that the already exorbitant Feed-in-Tariffs should be increased! The sum mentioned would relate to over £1500 per annum, index linked for 20 years, to supply each average-house-worth's of electricity generated – which would not do a lot for the rapid increase in energy costs!

8 The gross scheme details in terms of turbine flow and residual flow are difficult to find. The estimated turbine flow appears to be $12 \text{ m}^3\text{s}^{-1}$ against a mean flow of $8.24 \text{ m}^3\text{s}^{-1}$ and a residual, or "hands-off" flow of $1.5 \text{ m}^3\text{s}^{-1}$, the latter appearing to be less than Q_{95} . These flows would be unrealistic for most rivers, but for an SSSI/SAC where migration without delay for all species is a target, they are totally unacceptable.

9 The maximum allowable turbine flow should be less than Q_{mean} . The residual should maintain the migration and the ecology of the depleted reach. To assure migration, the main route (the natural river) should have the majority of flow at all times (and the turbine outflow should have its velocity retarded). Such a residual flow should also maintain the ecology of the depleted reach, but as no information is presented this cannot be assured. The existing fish pass is inadequate, but no information is available concerning passage directly over the weir. If the latter is passable at certain flows, then this would be severely compromised with the proposed flow regime.

10 Two schemes are described – a “standard” Kaplan propeller type and a new, experimental, variant using the Bernoulli venturi theorem. There have been several previous attempts at using the latter technique, but we are not aware of any that have been particularly successful, nor are we aware of any environmental evaluation. A summary of other turbine types is described but, surprisingly, not an Archimedean screw.

11 7. 3mm screens are described for both schemes, but sized only for a blocking ratio of 1.25. A ratio of 1.5 would be more appropriate. The layout of the screens for both systems do not appear to be best practice

MEMBERSHIP APPLICATION FORM

RIVER EDEN & DISTRICT FISHERIES ASSOCIATION

BANKERS ORDER 2010

TO.....Bank PLC

.....
.....
**Please pay to HSBC Bank PLC, English Street, Carlisle for the credit of :-
RIVER EDEN & DISTRICT FISHERIES ASSOCIATION. Sort code 40-16-22
Account No. 71414658. The sum of.....pounds (£.....)
The first payment being made immediately, and on first day of November in every
Year until further notice from me in writing, and debit the amount/s paid to my account.
Signature.....**

Name & Address.....

(CAPITALS)

.....

Post Code.....

MINIMUM current subscription rates :-

- Individual £10.00
- Riparian Owners £35.00
- Clubs with up to 50 members £25.00
- Clubs with 51 to 200 members £48.00
- Clubs with over 200 members £100.00
- Associated commercial activity £ by donation

To become an individual member of the River Eden & District Fisheries Association, simply fill in the Bankers Order as indicated and sent it to your Bank. Alternatively send a cheque for £10.00 to the Treasurer, Mr. M. Harrison.

Quarry Bank, Maiden Hill, Penrith. Cumbria CA11 8SQ

This will entitle you to vote at the A.G.M., and receive a copy of the Annual Report.

(Please return this completed Bankers Order form to your own Bank)

New members are very welcome. (and needed)